



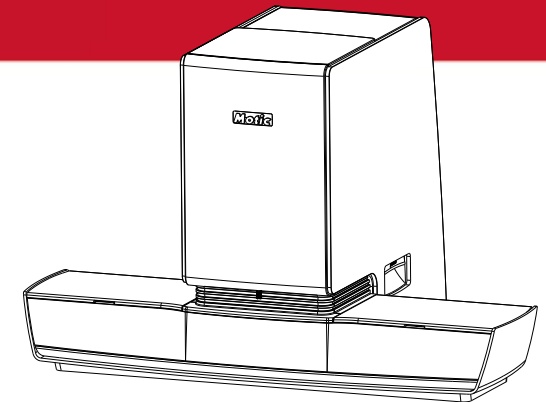
## *MoticEasyScan Pro*

The MoticEasyScan Pro is the perfect gateway product for any lab, startup, or medical organization joining the digital revolution in pathology. Simple and easy to use, this scanner system offers 1-slide and 6-slide capacity options. It scans and uploads high-quality digital slides to your slide management server, all at a single click. With its small footprint, high resolution power, and hassle-free setup, this multipurpose scanner is the ideal tool for any application that requires glass slide digitization.

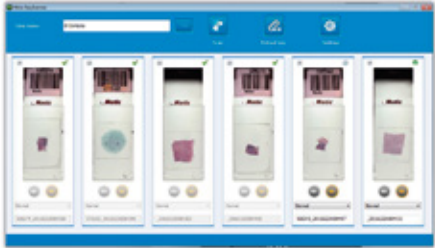
MoticEasyScan scanners use a specially designed high-NA Plan Apochromatic objective (20X/0.75) to maximize color fidelity and resolution power. Combined with a large 2/3" CCD sensor, the MoticEasyScan is able to image large fields of view in a split second, while delivering image detail equivalent to a high power 40X lens.

## *MoticEasyScan Pro*

UPGRADE YOUR LAB, IMPROVE YOUR WORKFLOW



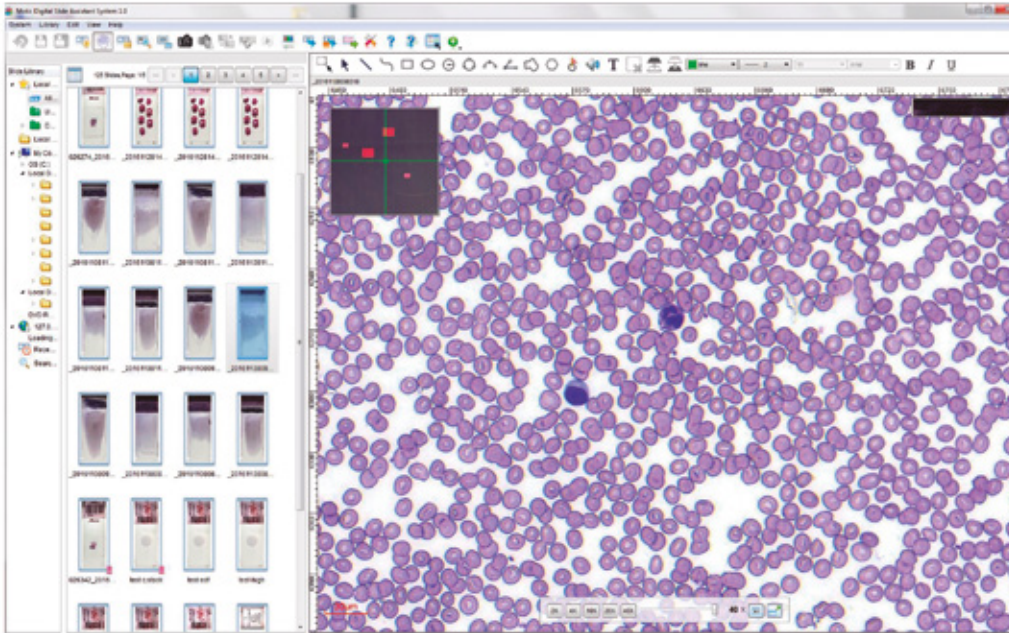
## SCANNING YOUR SAMPLE



### EasyScanner Software

Scan up to 6 slides in just one-click. Customized scanning modes may be chosen for the single slides within the slide carrier. Slide labeling through a barcode enables the implementation of the scanning process into the daily workflow.

## WORKING WITH YOUR DIGITAL SLIDE



### DSAssistant Software

Contains a Tab with the Digital slide library (thumbnails and basic image information), and the Tab for Slide Edition with several tools like image adjustment, annotations, measurements, encryption, image comparison, image export or conference tool for group discussions.

TECHNICAL SPECIFICATIONS	MoticEasyScan Pro 1	MoticEasyScan Pro 6
<b>Objectives</b>	Plan APOCHROMAT 20X/0.75 S Apo Objective 10X/0.3	
<b>Optical System</b>	CCIS®	
<b>Scanning time</b> (15x15mm - full tissue)	Standard mode: 160s (40X - with 20X objective) Standard mode: 60s (20X - with 10X objective)	
<b>Resolution</b>	40X: 0.26µm/pixel 20X: 0.52µm/pixel	
<b>Focusing Technique</b>	Real-time autofocus	
<b>Scanning camera</b>	5.0 MP (2/3" high speed Sensor)	
<b>Nosepiece</b>	3 hole	
<b>Light source</b>	10W LED (Lifetime: 25,000 Hours)	
<b>Slide capacity</b>	1 Slide	6 Slides
<b>Slide Tray</b>	1 Slide Capacity	6 Slide Capacity
<b>Slide dimensions</b>	76 x 26mm	
<b>Slide tolerances (mm)</b>	Length: +0/-1, Width: +0/-1	
<b>Scanning mode</b>	Normal (Real-time autofocus) High precision (High precision autofocus) EDF (Extended depth of field) Z-Stack (Three Dimensional stacking)	
<b>Barcode Support</b>	1D: Interleaved 2 of 5, Code 39, Code 128 2D: Data Matrix, QR Code	
<b>Computer</b>	Included Dell OptiPlex 7450 All-in-One PC with 4K Resolution Intel Core i7-7700 / 16GB Memory 128GB SSD & 1TB SATA Disk DVD Recorder / Wireless Keyboard and Mouse Windows 10 Professional 64-bit	
<b>Monitor</b>	Included: All-in-One 23.8" LED Monitor	
<b>Interface</b>	USB 3.0	
<b>Included software</b>	DSAssistant EasyScanner software (for MoticEasyScan Pro)	
<b>Optional software</b>	DSAConference, DSServer	
<b>Optional objective</b>	S Apo Objective 40X/0.75	
<b>Optional Modules</b>	No	Vet Mode (76x50mm slide)
<b>Dimensions</b>	645 x 398 x 420mm	
<b>Net weight</b>	~16 Kg.	